

FOR UK PATIENTS PRESCRIBED METOJECT® ONLY

**meto**  
**/ect**® PEN  
METHOTREXATE

# Using your child's Metoject® PEN



: medac pharma

## ABOUT METOJECT® PEN

Your child has been prescribed Metoject® PEN. Metoject® PEN is an autoinjector, pre-filled with methotrexate. Metoject® PEN is used to treat polyarthritic forms of severe, active juvenile idiopathic arthritis (JIA).

Metoject® PEN is available in 10 doses which are colour coded for clear identification.

7.5 mg (0.15 ml)	10 mg (0.2 ml)	12.5 mg (0.25 ml)	15 mg (0.3 ml)	17.5 mg (0.35 ml)
20 mg (0.4 ml)	22.5 mg (0.45 ml)	25 mg (0.5 ml)	27.5 mg (0.55 ml)	30 mg (0.6 ml)

## CONTENTS

<b>3</b>	<b>ABOUT METOJECT® PEN</b>
<b>5</b>	<b>METOJECT® PEN REMINDERS</b>
<b>6</b>	<b>INJECTION SITES</b>
<b>7</b>	<b>HOW TO USE YOUR CHILD'S METOJECT® PEN</b>
<b>11</b>	<b>FREQUENTLY ASKED QUESTIONS</b>

## BEFORE USING METOJECT® PEN

### PRECAUTIONS

Do not use Metoject® PEN if your child:

- ▶ Is allergic to methotrexate
- ▶ Suffers from severe liver, kidney or blood diseases
- ▶ Suffers from any severe infection e.g. tuberculosis or HIV
- ▶ Has a mouth, stomach or intestinal ulcer
- ▶ Is receiving vaccinations with live vaccines at the same time

### CONSULT THEIR HEALTHCARE PROFESSIONAL IF YOUR CHILD:

- ▶ Has had shingles or chicken pox as these may flare up
- ▶ Has diabetes mellitus and is being treated with insulin
- ▶ Feels generally unwell and weak
- ▶ Has problems with the way their liver works
- ▶ Suffers from dehydration (water loss)

## MONITORING

Even when administered in low doses there is a possibility that your child could experience some side effects, therefore your child will need to have regular check ups and blood tests. You will be familiar with these tests if your child has already taken oral methotrexate.

Before starting treatment with Metoject® PEN, your child will have blood samples taken. These will be used to check liver and kidney functions, for example.

## STORAGE

Metoject® PENs should be stored at room temperature in the original outer carton. However, if the room temperature rises above 25°C, then store in a cooler, dry place or in a fridge (minimum temperature 2°C). Keep PENs out of sight and reach of children.

## SUN EXPOSURE

Methotrexate treatment may make your child's skin more sensitive to the sun and cause severe reactions that look and feel like sunburn. Protect your child's skin by using a high factor sunscreen, reapply regularly and avoid exposure to intense sunlight (especially during the hours of 11am and 3pm) or UV rays (e.g. sunbeds).

## TRAVEL ADVICE

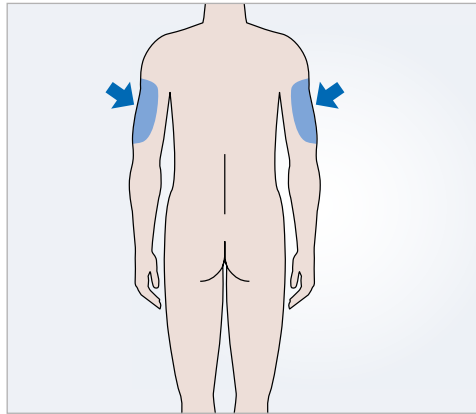
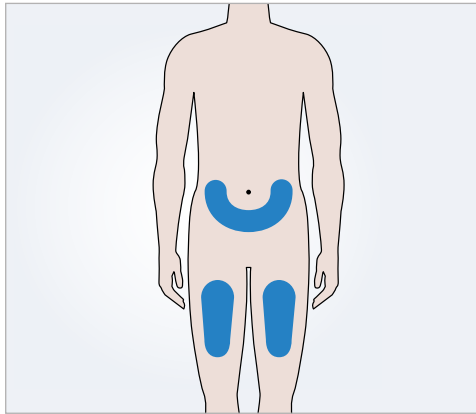
When flying, Metoject® PENs must always be carried in your hand luggage. If required by the airline, ask your child's doctor for a letter, or ask them to complete a Metoject® PEN travel certificate (which can be downloaded from [www.metoject.co.uk](http://www.metoject.co.uk)), confirming your child has been prescribed this medication.

- ▶ If your child needs any vaccinations before travelling, please check with their healthcare professional FIRST
- ▶ If your child develops diarrhoea and or/vomiting whilst on holiday, stop giving them Metoject® PEN and seek medical advice
- ▶ For further travel advice, speak to your child's healthcare professional

## METOJECT® PEN REMINDERS

- ▶ **Only inject with Metoject® PEN ONCE a week**
- ▶ Inject on the same day each week
- ▶ Your child should not take oral methotrexate whilst being treated with Metoject® PEN
- ▶ If you forget to inject with Metoject® PEN on the correct day, contact your child's healthcare professional for advice
- ▶ Contact your child's healthcare professional URGENTLY if they develop a dry cough or become breathless whilst being treated with Metoject® PEN
- ▶ Methotrexate can interact with other drugs so please check with your child's healthcare professional before taking any other medication
- ▶ Regular monitoring is important
- ▶ Check with your child's healthcare professional if they need any vaccinations

## INJECTION SITES



- ▶ Injection sites are in the upper thighs or abdomen (except within 5cm around the belly button)
- ▶ Always use a different site than your child's last injection
- ▶ Do not inject into the skin that is bruised, tender, scaly, red or hard. Do not inject into moles, scars or stretch marks
- ▶ You may also use the area at the back of the upper arm

## HOW TO USE YOUR CHILD'S METOJECT® PEN

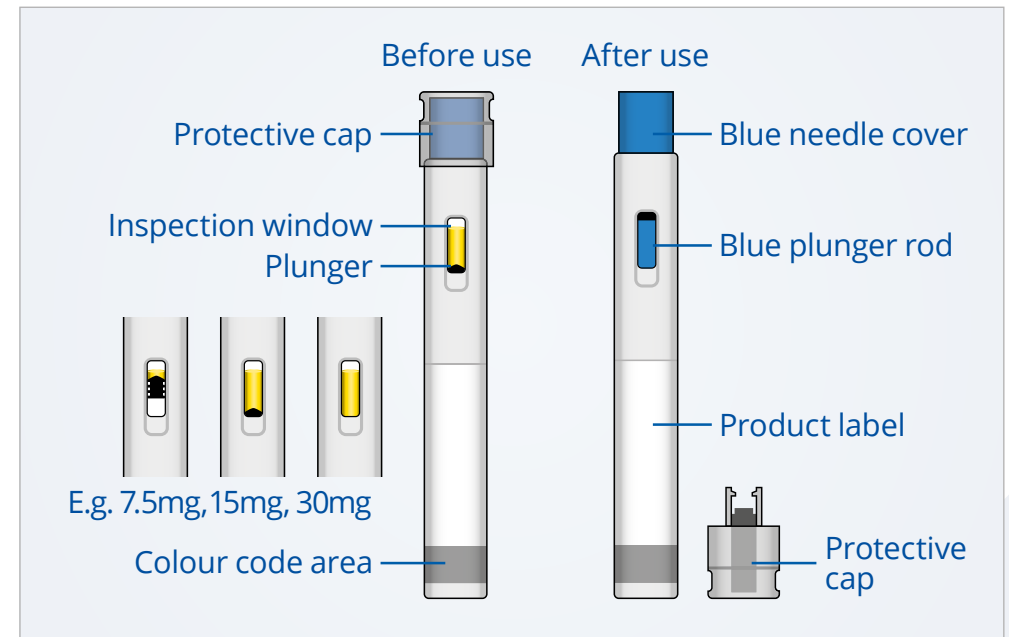
To watch a video which explains the different steps of the injection process, please scan this QR code.



At the start of your child's treatment, Metoject® PEN may be injected by medical staff. However, your child's healthcare professional may decide that you can learn how to inject Metoject® PEN yourself. You will receive appropriate training on how to do this.

Metoject® PEN is a single use device and is injected **ONCE a week**. Please read the following instructions carefully.

## PEN DETAILS



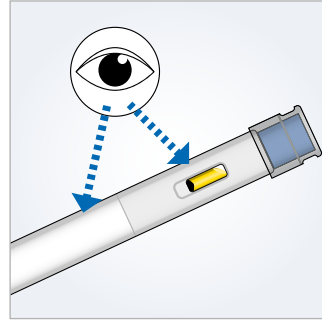
# INSTRUCTIONS

## WASH YOUR HANDS



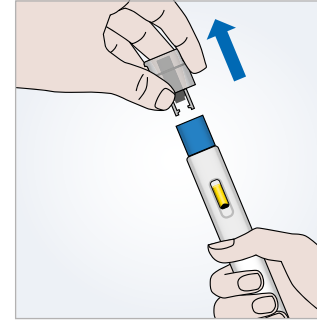
- ▶ Wash your hands with soap and water then carefully take the pen out of the carton
- ▶ Do not remove the protective cap until you are ready to administer the injection

## CHECK



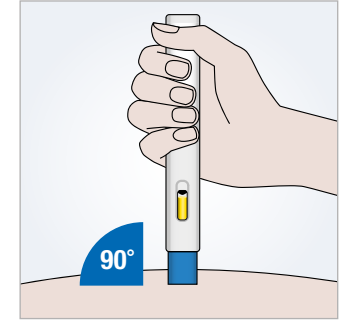
- ▶ Check the name, dose and expiry date on the pen
- ▶ Check the medicine through the inspection window, it should be clear and yellow. It is normal to see one or more air bubbles

## REMOVE THE CAP



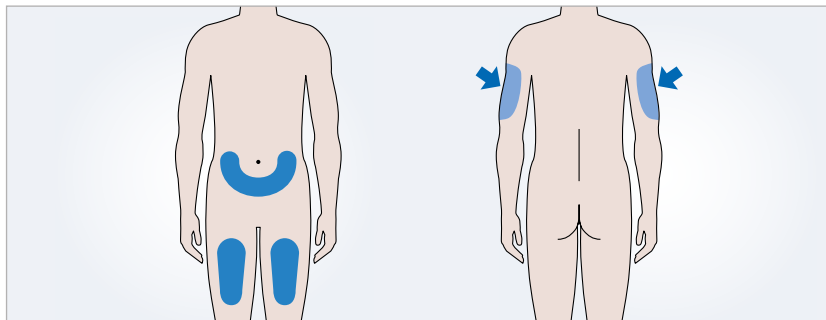
- ▶ Only remove the protective cap when you are ready to administer the injection
- ▶ **Do not** bend or twist the cap while pulling off
- ▶ Do not try to put the cap back on once it's removed

## POSITION THE PEN



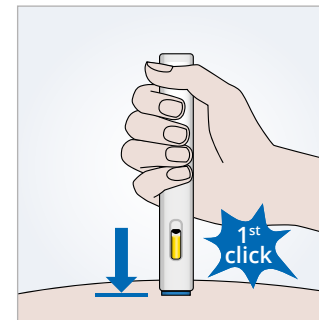
- ▶ Hold the pen firmly and position the blue needle cover at a 90-degree angle against the skin, with the inspection window facing towards you so you can see it

## INJECTION SITE



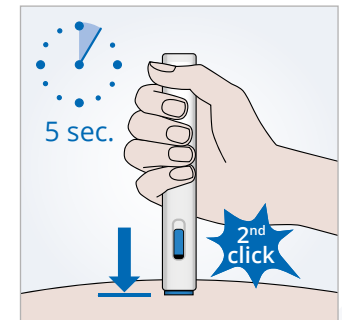
- ▶ You can inject into your child's upper thighs or the lower part of their abdomen (except within 5cm around the belly button)
- ▶ You may also use the area at the back of the upper arm

## START THE INJECTION



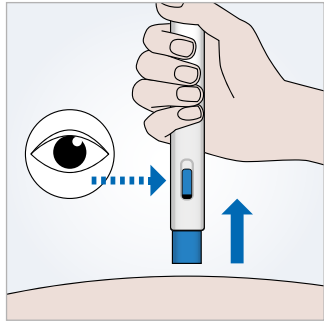
- ▶ To start the injection, push the pen down all the way
- ▶ This will slide the blue needle cover up into the pen and the injection will start automatically

## HOLD THE PEN



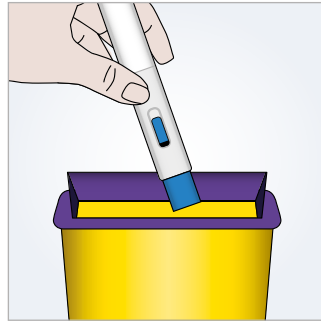
- ▶ A first acoustic signal, or click, indicates the start of the injection
- ▶ The blue plunger will move down in the inspection window
- ▶ Keep holding the pen until all the medicine is injected

### FINISH THE INJECTION



- ▶ The injection is complete when either:
  - you hear a 2<sup>nd</sup> acoustic signal, or click shortly after the first,
  - OR the blue plunger has stopped moving and fills the inspection window
  - OR five seconds have passed
- ▶ Remove the pen by pulling it straight up from the injection site

### DISPOSE



- ▶ The blue needle cover automatically moves into place over the needle, and is then automatically locked
- ▶ Do not recap the pen
- ▶ Dispose of the used cap and pen into the sharps bin as instructed by a healthcare professional
- ▶ The paper carton can be recycled

## FREQUENTLY ASKED QUESTIONS

### How long will it take for Metoject® PEN to work?

It can take between 4 and 12 weeks before there is any effect of the treatment. Your child will be monitored regularly so do not alter the treatment or stop giving it to your child without speaking to your child's healthcare professional first.

### How many doses are in Metoject® PEN?

The PEN is a single use device and will deliver only one dose. Dispose of the used PEN after injection in your sharps bin.

### What should I do if there is a small droplet of liquid after removing the cap?

You may notice small droplets of the medicine after removing the cap. This is normal and will not affect your dose.

### What should I do if there is an air bubble in Metoject® PEN?

If an air bubble is visible, do not try and remove it, as it will not affect the dose or cause harm.

### For more information on Metoject® PEN, please visit [www.metoject.co.uk](http://www.metoject.co.uk)

We are unable to provide individual medical advice. Therefore, if you are concerned about any aspect of your child's treatment, please discuss this with your child's doctor, nurse, or pharmacist. For further information about metoject® PEN, please visit [www.metoject.co.uk](http://www.metoject.co.uk), which contains a training video and support material. Alternatively, please call us on 01786 458086

This is a guide on how to use Metoject® PEN. Please read the Patient Information Leaflet contained within the carton for further details.

If your child gets any side effects, talk to your child's doctor, pharmacist or nurse. This includes any possible side effects not listed in this leaflet. You can also report side effects directly via the Yellow Card Scheme at: [www.mhra.gov.uk/yellowcard](http://www.mhra.gov.uk/yellowcard) or search for MHRA Yellow Card in the Google Play or Apple App Store.

By reporting side effects you can help provide more information on the safety of this medicine.

